

**American River Parkway Foundation**  
**Artwork by Gregory Kondos - Order Form**

**Shipping Information:**

Name \_\_\_\_\_

Company Name \_\_\_\_\_

Street Address \_\_\_\_\_

Mailing Address \_\_\_\_\_

City, State, Zip \_\_\_\_\_

Phone Number \_\_\_\_\_



Summer Day – American River



A View from Jim's Bridge

NOTE: Posters and Lithographs are 23 ¼” x 19 ½”, including white border. Lithographs are signed and numbered. Posters only contain the words: “American River Parkway Foundation” below the image.

<u>Subtotal</u>	<u>Qty</u>
Print-Quality Poster - \$15.00	_____
___ Summer Day    ___ A View From Jim's Bridge	_____
Signed, Print-Quality Poster - \$40.00	_____
___ Summer Day    ___ A View From Jim's Bridge	_____
Signed, Limited Edition Lithograph - \$275.00	_____
___ Summer Day    ___ A View From Jim's Bridge	_____
Shipping and Handling \$5.00	_____
<b>Order Total:</b>	_____

Please make checks payable to American River Parkway Foundation and send to:

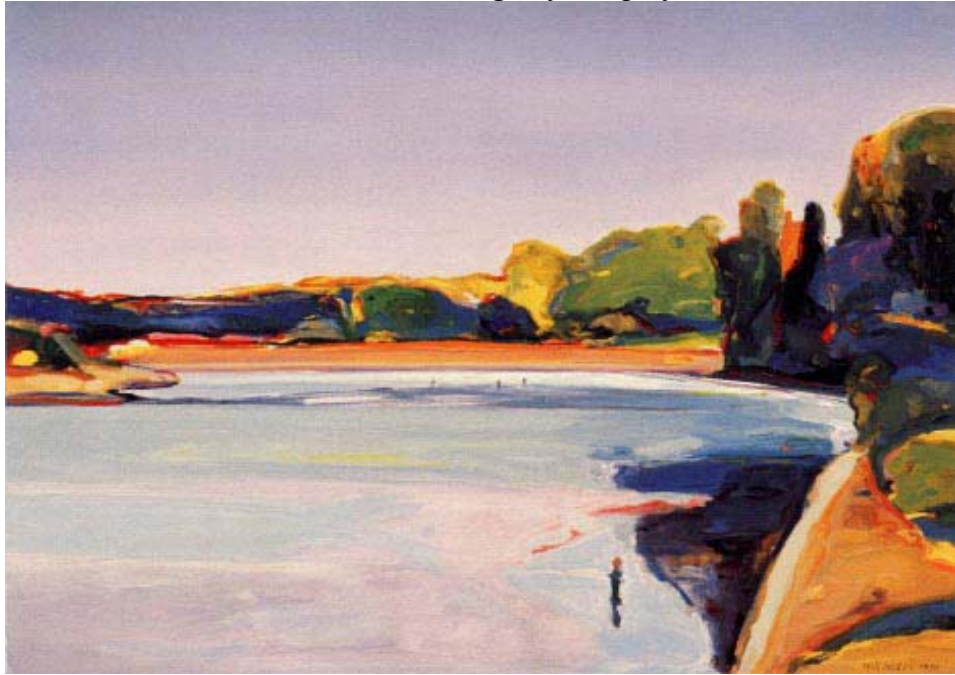
**American River Parkway Foundation**  
**5700 Arden Way**  
**Carmichael, CA 95608**

Please contact the Foundation with any questions:

Phone: (916) 486-2773      Fax: (916) 486-2779      e-mail: [info@arpf.org](mailto:info@arpf.org)

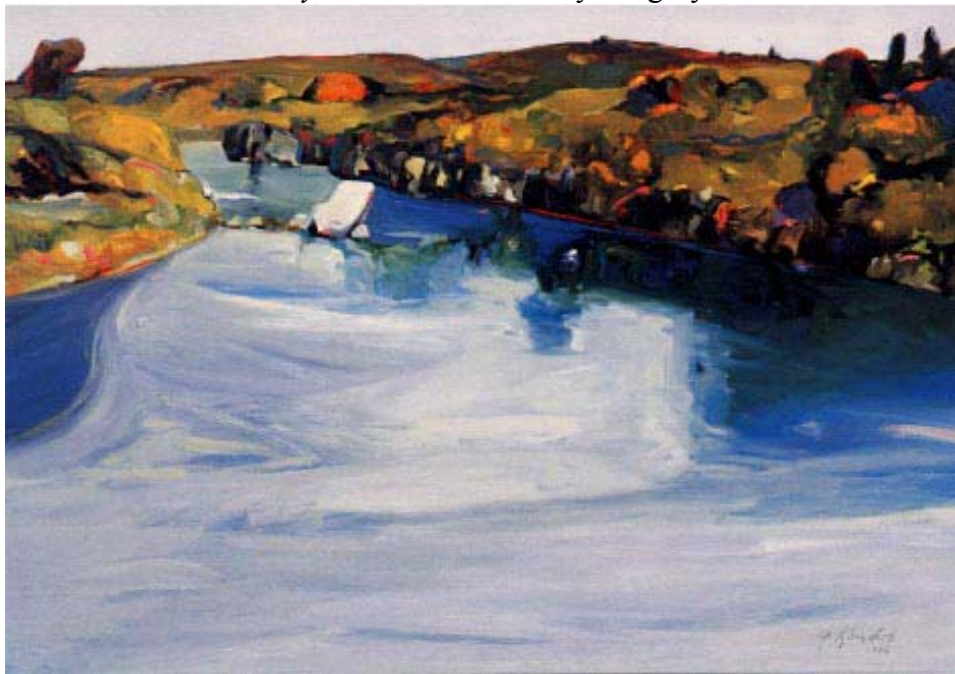
Internationally acclaimed landscape artist Gregory Kondos has provided the Parkway Foundation with the opportunity to utilize his talents to raise funds for its many programs.

*A View From Jim's Bridge* by Gregory Kondos



Actual Size: 23¼" x 19½" (including border)

*Summer Day – American River* by Gregory Kondos



Actual Size: 23¼" x 19½" (including border)

Please note: The colors in the originals of these prints/lithographs are much more vibrant than they appear here. To view the actual items, please visit the American River Parkway Foundation at 5700 Arden Way, Carmichael, CA 95608. Please call the Foundation at (916) 486-2773 with any questions. You can order securely online at [www.arpf.org](http://www.arpf.org), or mail the following order form.

## Gregory Kondos Information/Bio

Gregory Kondos has been the pride of Sacramento for over 50 years. His beautiful paintings of the Sacramento Delta and the American River have not only given the Valley's art community a flavor of its own, but have represented this regions with colorful landscapes that bring the out-of-doors into our homes.

Mr. Kondos dedicated his life to painting after discovering his talent aboard a Navy vessel in 1943. Ever since, he has painted the world, always returning to share his knowledge with us in the Sacramento area. Mr. Kondos has received numerous awards for his work, including an award from the *Third Winter Invitational*, California Palace of the Legion Honor in 1963, and the *Distinguished Service Award* from the California State University, Sacramento in 1994. Mr. Kondos' art can also be seen at the new terminal at the Sacramento International Airport, in the form of a 450-foot glass representation of Sacramento's rivers.

The American River Parkway Foundation thanks Gregory Kondos for contributing his works, *A View from Jim's Bridge – American River*, and *Summer Day – American River*, to benefit the Foundation's efforts to preserve, enhance, and foster an appreciation for the American River Parkway. Lithographs and prints of both paintings are available at the American River Parkway Foundation.